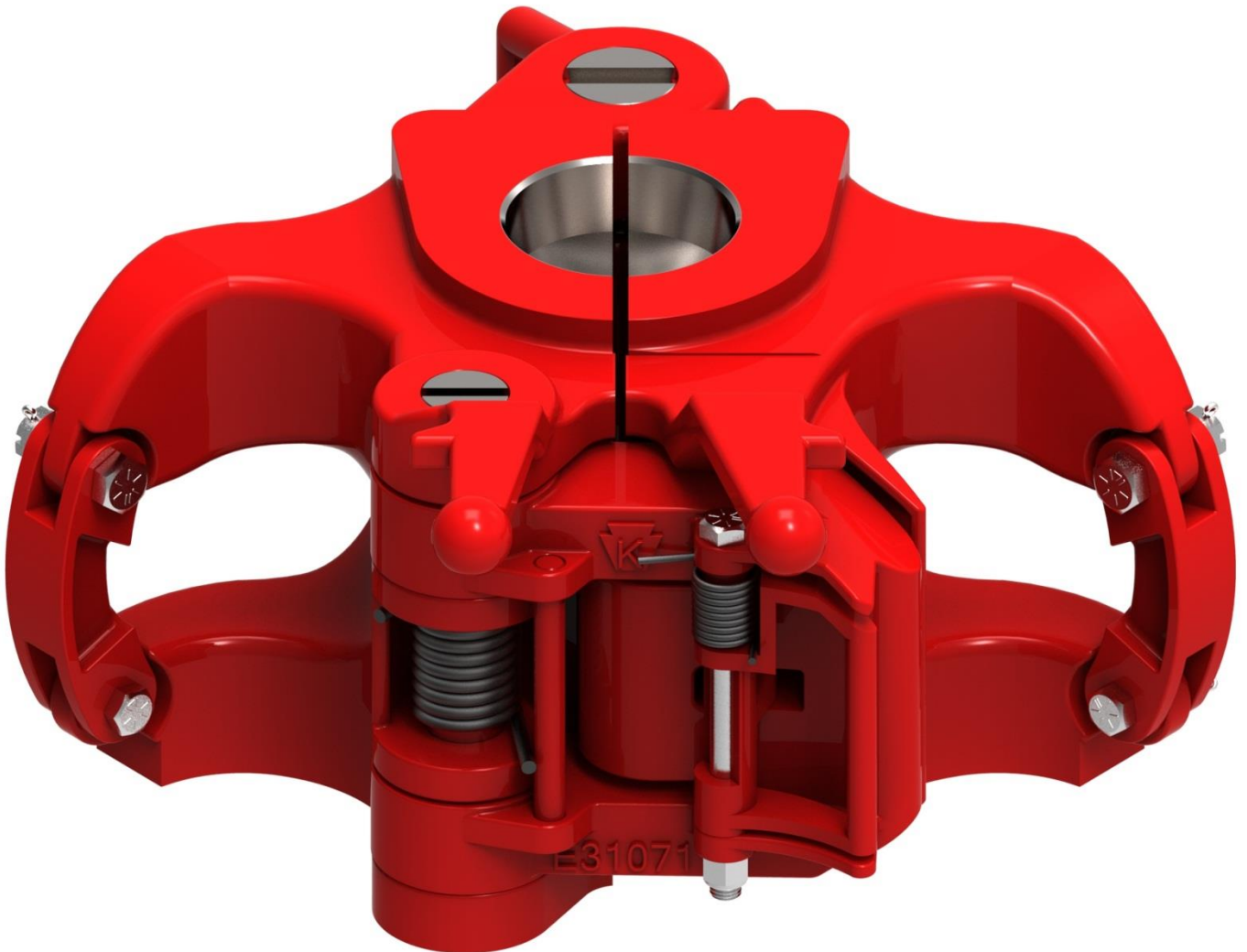




“G” SERIES ELEVATOR

OPERATING PROCEDURE MANUAL



"G" SERIES ELEVATOR

SAFETY INSTRUCTIONS

⚠ WARNING



To reduce the risk of injury, everyone using, installing, performing maintenance, changing accessories on, or working near this tool must read and understand these instructions before performing any such task.

The most important safety device for this tool is **YOU**. Your good judgment is the best protection against injury.

Operating Hazards

- ⚠ Do not overload the elevator. Overloading the recommended rating could cause serious injury or death.
- ⚠ Check the latch for proper engagement. A malfunctioning latch could cause the elevator to unexpectedly unlatch or not latch at all and could result in injury or death.
- ⚠ Always insure that the elevator and bore code are correct for the tubular it is to be used on. Failure to use the proper elevator and bore code could result in injury or death.
- ⚠ Insure that the tool joint or collar O.D. of the pipe is correct. Failure to maintain adequate contact area could result in injury or death.
- ⚠ To prevent injury or elevator malfunction, inspect the elevator bore, latch, latch pin and hinge pin regularly for wear. Failure to inspect these parts could cause injury or death.
- ⚠ Do not use oversized pipe. Using oversized pipe could make it difficult or impossible to properly latch the elevator
- ⚠ Do not use undersized pipe. Using undersized pipe could cause an inadequate load bearing area and uneven stress distribution. Both of which may result in injury or death.
- ⚠ Do not use the elevator if the latch or latch lock is malfunctioning. Latch or latch lock failure, may result in injury or death.

Workplace Hazards

- ⚠ Keep hands / fingers clear of elevator bore when installing the elevator on the pipe.
- ⚠ Always use the proper tools and wear eye, head and hand protection when servicing this elevator.
- ⚠ Maintain a balanced body position and secure footing.
- ⚠ For professional use only.

Maintenance Hazards

- ⚠ Use only Keystone Energy Tools parts.
- ⚠ KET equipment is made of cast alloy heat treated steel and should never be welded on in the field. Improper welding can cause cracks or brittleness in the casting which could result in drastic weakening or failure of the equipment. Any welding or machining must be performed by an authorized KET or API Certified Repair Center
- ⚠ Improper welding and/or re-machining of cast alloy heat treated steel can cause personal injury, property damage or death.

Table of Contents

2	SAFETY INSTRUCTIONS – “G” Series Elevator
4	1.0 Introduction
4	Figure 1 – Model Specifications
4	Figure 2 – Warning Label
4	2.0 Operation
5	3.0 Maintenance
5	Figure 3 – Tool Maintenance Chart
6	Figure 4 – Locations of Tool Maintenance Items
7	4.0 Repair
8	Figure 5 – Critical Areas
9	Replacement Parts – MG Elevator
10	Wear Data – MG Elevator
11	Replacement Parts – RG Elevator
12	Wear Data – RG Elevator
13	Replacement Parts – MGG Elevator
14	Wear Data – MGG Elevator
15	Replacement Parts – GG Elevator
16	Wear Data – GG Elevator
17	Replacement Parts – HGG Elevator
18	Wear Data – HGG Elevator
19	Certificate of Warranty and Guarantee of Quality

1.0 Introduction

This manual contains operation and maintenance instructions for the Keystone Energy Tools (KET) “G” series, bottleneck and center latch elevators for handling 18 degree external upset drill pipe with assembly drawings and complete parts breakdown. It provides a guide for proper field use, disassembling and repair.

(KET) “G” series elevators are designed to fit the contour of 18 degree type drill pipe. They are balanced making them easy to handle as well as easy to latch on or take off at any point below the upset of the pipe. “G” series elevators are made of high alloy-heat treated steel and designed to meet or exceed API specifications.

The “G” series elevators include safety features such as guarded operating handles to help prevent injury to operators and an extra handle at the rear of the elevator for easier, safer operation. All “G” series elevators incorporate a latch and safety latch lock combination. The size range of the “G” series elevator is as illustrated in the table provided.

(See Figure 1)

Model	Tons	Range
MG	100	2-3/8" - 5"
RG	150	2-3/8" - 4-1/2"
GG	350	3 1/2" - 5 1/2"
MGG	250	3 1/2" - 5 1/2"

Figure 1

NOTE: WARNING labels have been installed at critical areas on the tool. Familiarize yourself with their message and locations before proceeding to operate equipment.

See Figure 2



Figure 2

2.0 Operation

As with any manual operated elevator, the “G” series is easily installed by the user. Perform the actions described below after the elevator is hoisted to the rig floor and properly positioned.

- ▶ Remove cotter pins and nuts from the link block bolts and then remove the bolts from the elevator.
- ▶ Lift the bottom of the link blocks and hook the small end of the links through the link blocks and link arms.
- ▶ Lower the link blocks and re-install the link block bolts, nuts and cotter pins.

The operation of the “G” series elevator is straightforward. The door is opened by gripping the latch lock and pulling outward. This automatically releases the latch and latch lock assembly so the elevator can be positioned on the pipe. When the elevator is properly closed around the pipe, the latch locks automatically.

(See Figure 4)

3.0 Maintenance

To ensure optimum performance, perform the below-listed daily checks.

- ▶ Visually inspects for cracks, loose fits or connections, elongation of parts, and other signs of wear, corrosion or overloading.
- ▶ Loose or missing components, deterioration, proper lubrication, and adjustment.
- ▶ Check for worn hinge pin, latch pin and latch lock pin. These may inhibit proper closing of the door and latch lock engagement.
- ▶ Check for proper operation of Latch Stop mechanism. Latch should not stop against the door when closed but have no more than 1/4" of standoff from the door.
- ▶ Check springs for damage, deformation and lack of tension.
- ▶ Check link block bolts for nuts and cotter pins.

The owner/user of the equipment should develop schedules of inspection based upon experience, manufactures recommendations and one or more of the following factors:

- ▶ Environment
- ▶ Load Cycles
- ▶ Regulatory requirements
- ▶ Operating time
- ▶ Testing
- ▶ Repairs
- ▶ Remanufacture

Proof Load Test shall be performed only once following manufacture or remanufacture. This is by applying a load equal to 1.5 times the rated load for a period no less than 5 min. A proof load test shall be followed by surface NDT no earlier than 24 hrs. after proof of testing.

Lubricate the elevator regularly during usage and storage to prevent corrosion. Use an extreme pressure, multi-purpose, lithium base grease of No. 1 or No. 2 consistency or a lubricant that meets MIL-SPEC-A907E.

When greasing of pins make sure the pump grease until it comes out of both ends.

Maintain elevator as prescribed in the below periodic Actions/Examinations.

(See Figure 3)

Tool Maintenance		
ACTION	FREQUENCY	FIG.
Grease Hinge Pin	Daily	4
Lubricate Latch Pin		4
Lubricate Latch Lock Bolt		4
Grease Underside of Lifting Eye		4
Grease Bore and Seating Surface		4
MPI Category III	Every 6 Months	5
MPI Category IV	Every 12 Months	5
Performance Load Test	Every 365 Days "See below"	-

Reference API 8B Recommended Practice

Every 12 months the equipment **shall** be disassembled to permit the necessary full NDT inspection of all primary load carrying components per ASTM E-709 (see figure 5). Including inspection for excessive wear, cracks, flaws, and deformations.

If any repair work is required the equipment shall be sent into a Keystone Energy Tool facility for evaluation.

"Performance Load Test" is recommended after 365 days of accumulative use. This test is to verify the function of the equipment to perform under the conditions or in conjunction with other equipment. The Performance Test may consist of loads up to, but not exceeding, the rated load of the equipment.

Maintenance Locations

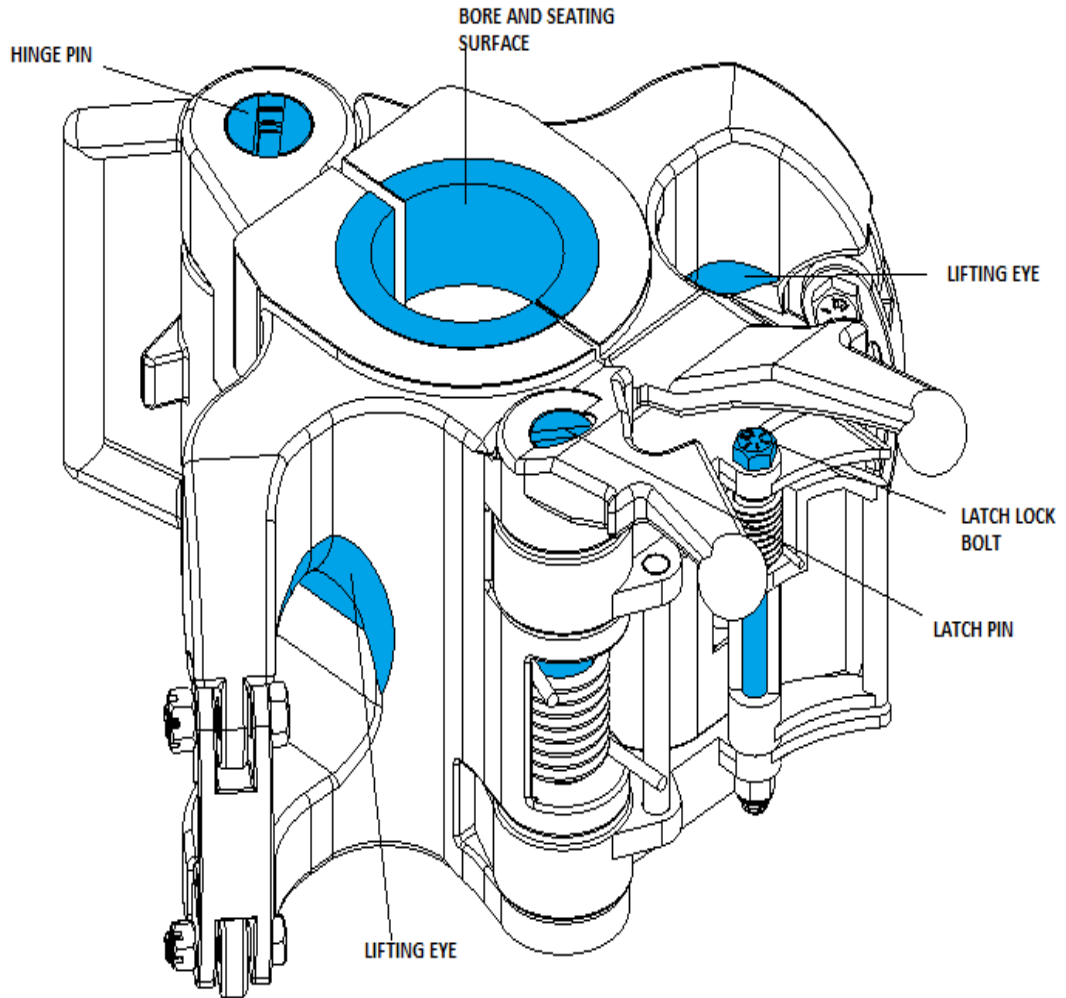


Figure 4

4.0 Repair

All G series elevators are designed and manufactured similarly. Both elevators incorporate lock bars to retain the hinge & latch pins. Both latch springs operate off the spring stop pin.

DISASSEMBLY PROCEDURE

- ▶ Remove the latch lock assembly and latch spring by driving or pressing out the lock bar and driving out the latch pin from the bottom of the elevator.
- ▶ Remove the latch lock from the latch by removing the Teflon nut and drive or press out the bolt.
- ▶ Remove the hinge pin by driving it out from the bottom of the elevator, shearing the lock bar in the process and remove the latch pin in the same manner. As an alternative method, the lock bar can be drilled in the center, then split by using a chisel and removed. In either case the lock bar must be discarded.
- ▶ If either link block is to be replaced, remove the link block bolt and cotter pins.
- ▶ If the door lug pin is damaged, drive or press it out from the bottom of the lug.
- ▶ Reassemble by reversing the above steps.
- ▶ Install new lock bars on hinge and latch pins.
- ▶ After assembly, ensure that full spring tension is available to close the latch & lock. The latch spring should contact the spring stop pin which in turn transmits the spring force to the latch.
- ▶ Check the latch for proper engagement with the door lug pin by holding the body and door apart (such that the latch contacts the lug on the door) and attempt to pry the latch open. After minimal of the latch the hook on the latch should engage with the door lug pin stopping the travel of the latch.
- ▶ Check link block bolts, nuts, and cotter pins.

We have identified those areas considered critical to tool performance and functionality. These should be examined for repair or replacement.

(See Figure 5)

NOTE 1: Bodies, doors and latches are specifically matched by trained Keystone Energy Tools professionals. For this reason, a body, door or latch from one elevator should never be exchanged with a body, door, or latch from another elevator.

Illustrated on page 8 are the critical and non-critical areas associated with the subject tool. Critical areas are identified by the shaded areas. All non-shaded areas are considered to be non-critical.

(See Figure 5)

Critical Areas

"G" SERIES ELEVATOR CRITICAL AREAS

AREAS HATCHED ARE
CONSIDERED CRITICAL AREAS.
AREAS NOT HATCHED ARE
CONSIDERED NON-
CRITICAL AREAS.

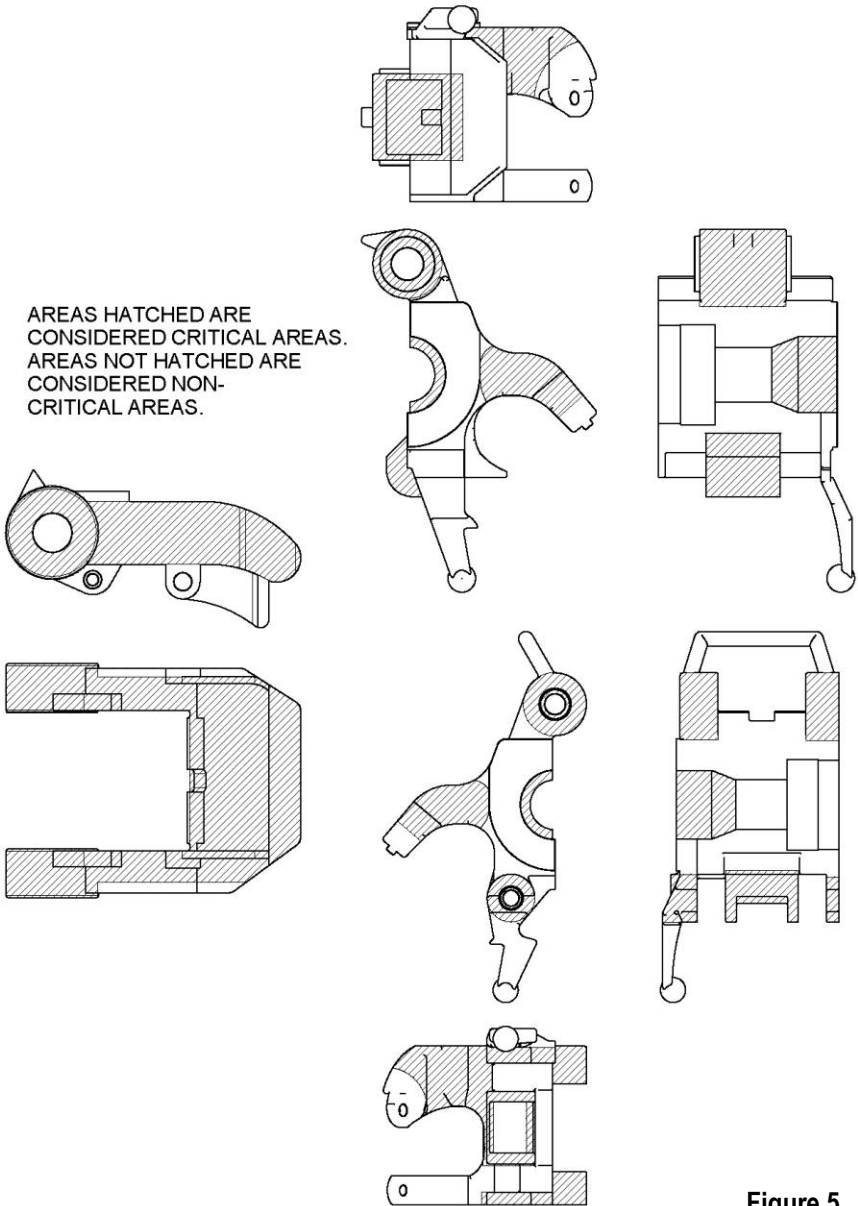
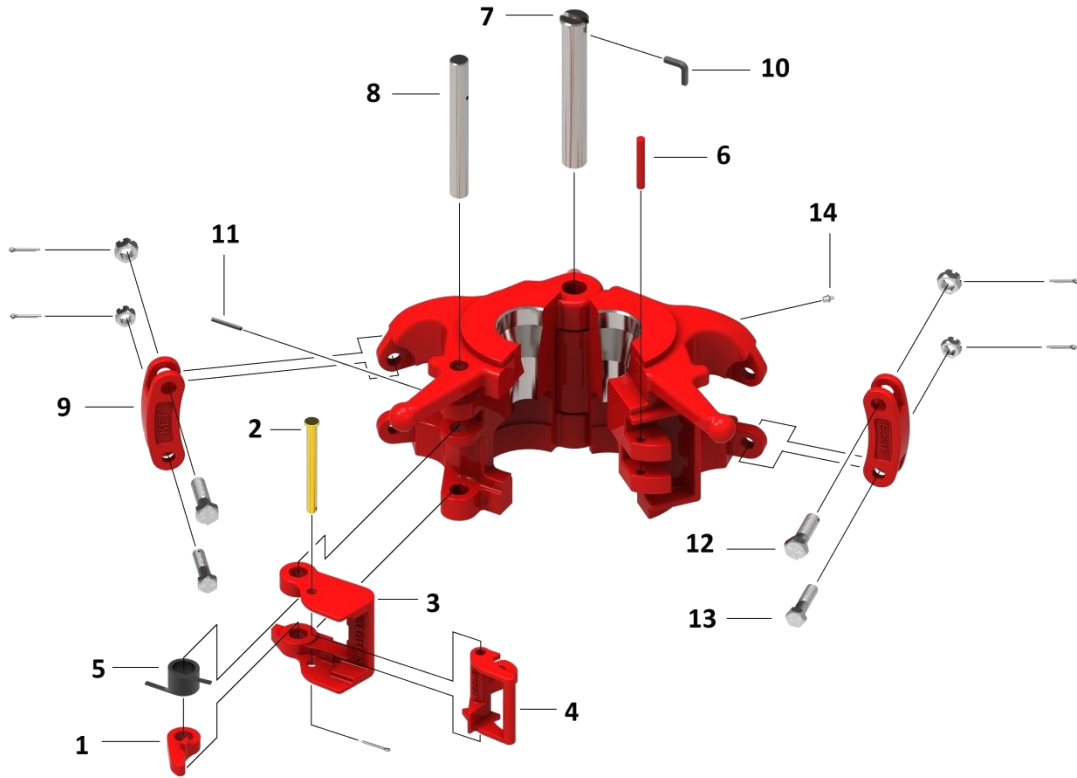


Figure 5

MG Replacement Parts



ITEM	QTY	PART No.	DESCRIPTION
1	1	E11581	LATCH CAM
2	1	E11759	LATCH LOCK PIN
3	1	E11763	LATCH
4	1	E11764	LATCH LOCK
5	1	E11766	LATCH SPRING
6	1	E12529	LATCH LUG PIN
7	1	E26813	HINGE PIN
8	1	E26814	LATCH PIN
9	1	E26817	LINK BLOCK
10	1	E29464	HINGE PIN RETAINER
11	1	E8156	LATCH PIN RETAINER
12	2	E8145-1	UPPER LINK BLOCK BOLT, NUT, & COTTER
13	2	E8145-2	LOWER LINK BLOCK BOLT, NUT, & COTTER
14	1	E940308-1	GREASE ZERT

Wear Data for MG Elevators

PART NUMBER	E30157
RATED CAPACITY	100 TON

STANDARD PINS

HINGE PIN PART #	E26813
TOTAL CLEARANCE(H)	.030
HINGE PIN MIN. DIA. NEW	1.497
BORE DIA.MAX. NEW	1.508
BORE DIA.MAX.WORN	1.527

LATCH PIN PART #	E26814
TOTAL CLEARANCE(L)	.030
LATCH PIN MIN. DIA. NEW	1.122
BORE DIA.MAX.NEW	1.133
BORE DIA.MAX.WORN	1.152

1/16" OVERSIZE PINS

HINGE PIN PART #	E26813-06
TOTAL CLEARANCE(H)	.030
HINGE PIN MIN. DIA.	1.560
BORE DIA.MAX. NEW	1.571
BORE DIA.MAX.WORN	1.590

LATCH PIN PART #	N/A
TOTAL CLEARANCE(L)	N/A
LATCH PIN MIN. DIA.	N/A
BORE DIA.MAX.NEW	N/A
BORE DIA.MAX.WORN	N/A

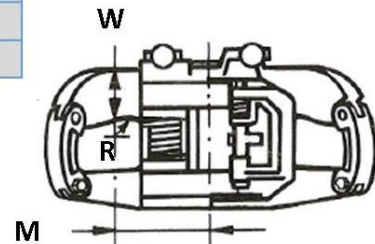
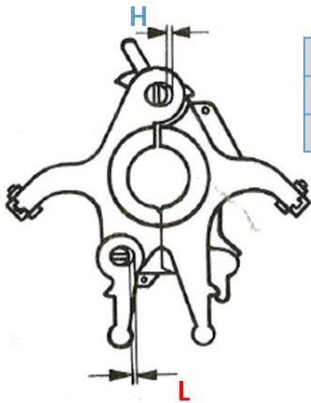
1/8" OVERSIZE PINS

HINGE PIN PART #	E26813-12
TOTAL CLEARANCE(H)	.030
HINGE PIN MIN. DIA. NEW	1.622
BORE DIA.MAX. NEW	1.633
BORE DIA.MAX.WORN	1.652

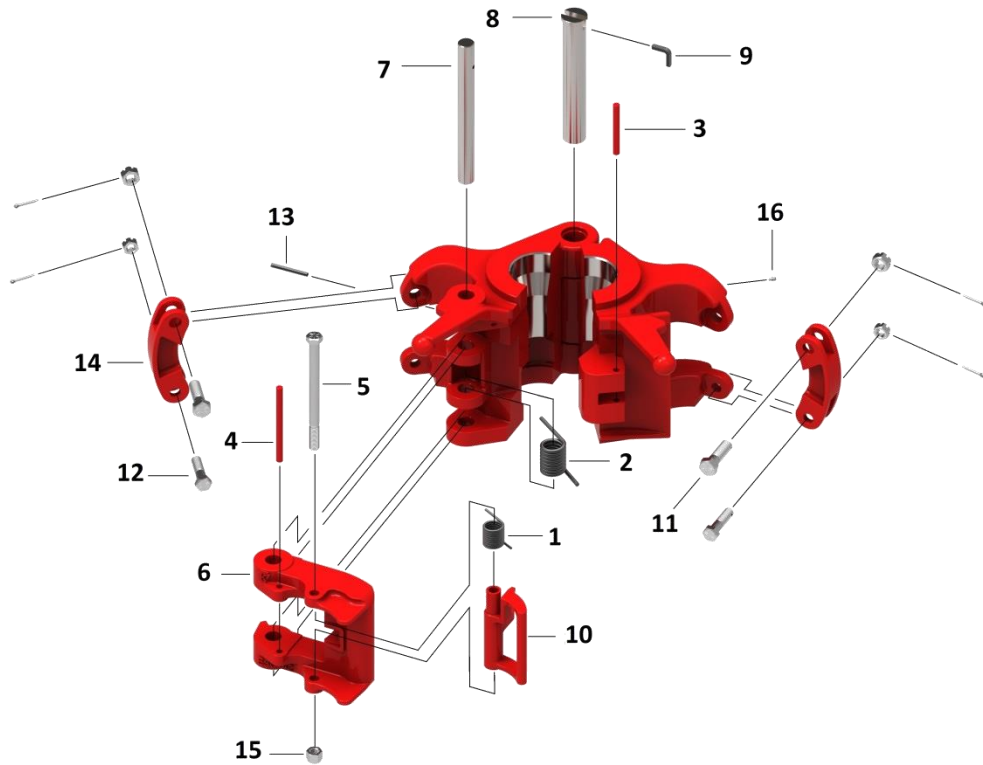
LATCH PIN PART #	N/A
TOTAL CLEARANCE(L)	N/A
LATCH PIN MIN. DIA. NEW	N/A
BORE DIA.MAX.NEW	N/A
BORE DIA.MAX.WORN	N/A

LIFTING EARS

DIMENSION (W)	3.750
RADIUS -R	1.500
DIMENSION (M)	5.000



RG Replacement Parts



ITEM	QTY	PART No.	DESCRIPTION
1	1	E13188	LATCH LOCK SPRING
2	1	E23546	LATCH SPRING
3	1	E23547	LATCH LUG PIN
4	1	E23548	SPRING STOP PIN
5	1	E23553	LATCH LOCK BOLT & NUT
6	1	E30142	LATCH
7	1	E30148	LATCH PIN
8	1	E30149	HINGE PIN
9	1	E30149-RT	HINGE PIN RETAINER
10	1	E30150	LATCH LOCK
11	2	E8145-1	UPPER LINK BLOCK BOLT, NUT, & COTTER
12	2	E8145-2	LOWER LINK BLOCK BOLT, NUT, & COTTER
13	1	E8156	ROLL PIN
14	2	E9519-1	LINK BLOCK
15	1	E939484-8	LATCH LOCK NUT
16	1	E940308-1	GREASE ZERT

Wear Data for RG Elevator

PART NUMBER	E30155
RATED CAPACITY	150 TON

STANDARD PINS

HINGE PIN PART #	E30149
TOTAL CLEARANCE(H)	0.030
HINGE PIN MIN. DIA. NEW	1.745
BORE DIA. MAX. NEW	1.752
BORE DIA. MAX. WORN	1.770

LATCH PIN PART #	E30148
TOTAL CLEARANCE(L)	0.030
LATCH PIN MIN. DIA. NEW	1.245
BORE DIA. MAX. NEW	1.252
BORE DIA. MAX. WORN	1.270

1/16" OVERSIZE PINS

HINGE PIN PART #	E30149-R
TOTAL CLEARANCE(H)	0.030
HINGE PIN MIN. DIA. NEW	1.807
BORE DIA. MAX. NEW	1.814
BORE DIA. MAX. WORN	1.833

LATCH PIN PART #	E30148-R
TOTAL CLEARANCE(L)	0.030
LATCH PIN MIN. DIA. NEW	1.307
BORE DIA. MAX. NEW	1.314
BORE DIA. MAX. WORN	1.333

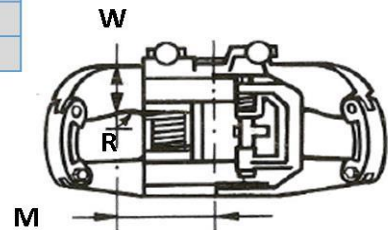
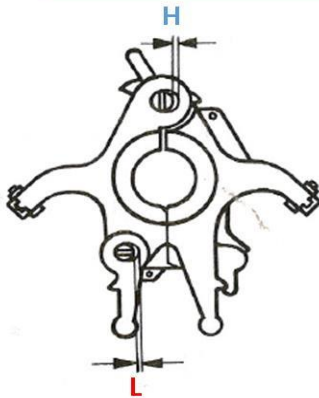
1/8" OVERSIZE PINS

HINGE PIN PART #	E30149-R
TOTAL CLEARANCE(H)	0.030
HINGE PIN MIN. DIA. NEW	1.870
BORE DIA. MAX. NEW	1.877
BORE DIA. MAX. WORN	1.895

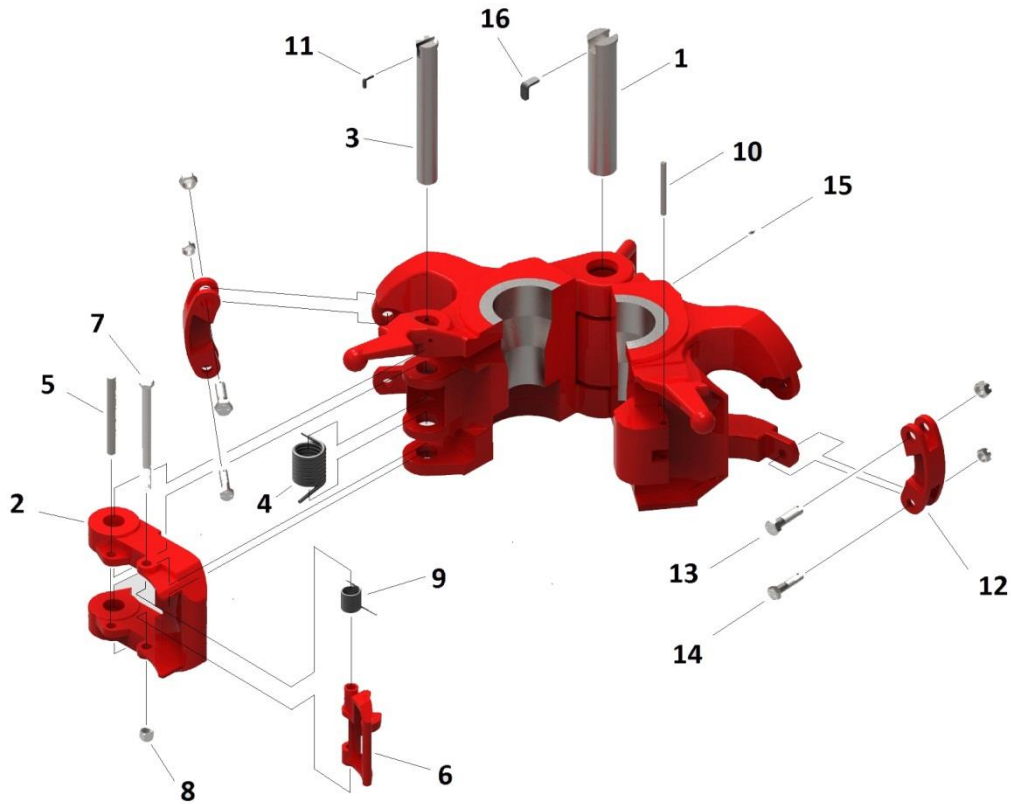
LATCH PIN PART #	E30148-R
TOTAL CLEARANCE(L)	0.030
LATCH PIN MIN. DIA. NEW	1.370
BORE DIA. MAX. NEW	1.377
BORE DIA. MAX. WORN	1.395

LIFTING EARS

DIMENSION (W)	3.750
RADIUS -R	1.625
DIMENSION (M)	6.375



MGG Replacement Parts



ITEM	QTY	PART No.	DESCRIPTION
1	1	E34908	HINGE PIN
2	1	E34906	LATCH
3	1	E34907	LATCH PIN
4	1	E34909	LATCH SPRING
5	1	E13185	SPRING STOP PIN
6	1	E13152	LATCH LOCK
7	1	E15101	LATCH LOCK BOLT
8	1	E939484-8	LATCH LOCK BOLT NUT
9	1	E13188	LATCH LOCK SPRING
10	1	E13190	DOOR LUG PIN
11	1	E34911	LATCH PIN RETAINER
12	2	E9519	LINK BLOCK
13	2	E8145-1	UPPER LINK BLOCK BOLT, NUT, & COTTER
14	2	E8145-2	LOWER LINK BLOCK BOLT, NUT, & COTTER
15	1	E940308-1	GREASE FITTING
16	1	E34910	HINGE PIN RETAINER

Wear Data for MGG Elevator

PART NUMBER	E35005
RATED CAPACITY	250 TON

STANDARD PINS

HINGE PIN PART #	E34908	LATCH PIN PART #	E34907
TOTAL CLEARANCE(H)	.030	TOTAL CLEARANCE(L)	.030
HINGE PIN MIN. DIA. NEW	2.300	LATCH PIN MIN. DIA. NEW	1.676
BORE DIA. MAX. NEW	2.318	BORE DIA. MAX. NEW	1.693
BORE DIA. MAX. WORN	2.336	BORE DIA. MAX. WORN	1.712

1/16" OVERSIZE PINS

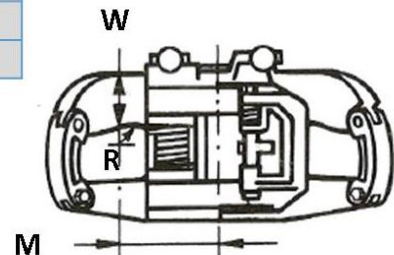
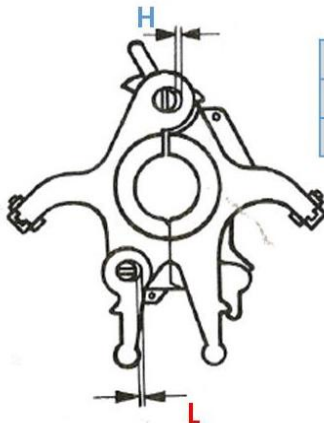
HINGE PIN PART #	E34908-R	LATCH PIN PART #	E34907-R
TOTAL CLEARANCE(H)	.030	TOTAL CLEARANCE(L)	.030
HINGE PIN MIN. DIA. NEW	2.363	LATCH PIN MIN. DIA. NEW	1.745
BORE DIA. MAX. NEW	2.381	BORE DIA. MAX. NEW	1.752
BORE DIA. MAX. WORN	2.399	BORE DIA. MAX. WORN	1.770

1/8" OVERSIZE PINS

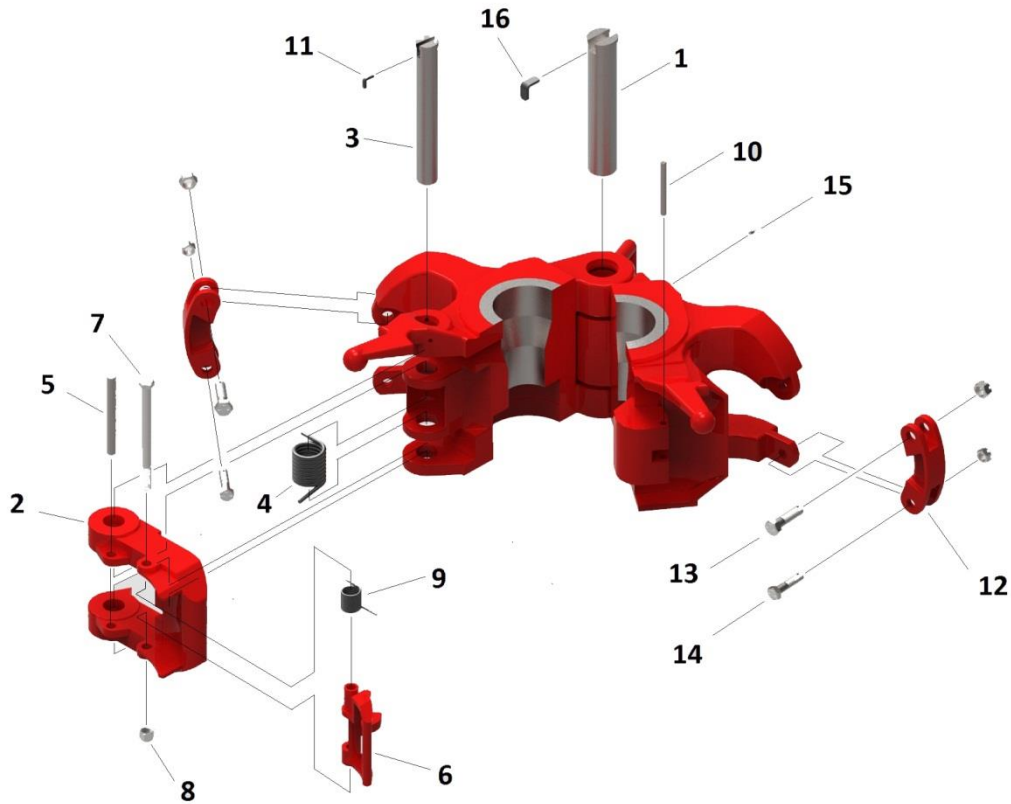
HINGE PIN PART #	E34908-R	LATCH PIN PART #	E34907-R
TOTAL CLEARANCE(H)	.030	TOTAL CLEARANCE(L)	.030
HINGE PIN MIN. DIA. NEW	2.425	LATCH PIN MIN. DIA. NEW	1.807
BORE DIA. MAX. NEW	2.443	BORE DIA. MAX. NEW	1.814
BORE DIA. MAX. WORN	2.461	BORE DIA. MAX. WORN	1.832

LIFTING EARS

DIMENSION (W)	4.250
RADIUS -R	1.875
DIMENSION (M)	6.813



GG Replacement Parts



ITEM	QTY	PART No.	DESCRIPTION
1	1	E33998	HINGE PIN
2	1	E31071	LATCH
3	1	E33999	LATCH PIN
4	1	E18416	LATCH SPRING
5	1	E13185	SPRING STOP PIN
6	1	E13152	LATCH LOCK
7	1	E15101	LATCH LOCK BOLT
8	1	E939484-8	LATCH LOCK BOLT NUT
9	1	E13188	LATCH LOCK SPRING
10	1	E13190	DOOR LUG PIN
11	1	E32892	LATCH PIN RETAINER
12	2	E9519	LINK BLOCK
13	2	E8145-1	UPPER LINK BLOCK BOLT, NUT, & COTTER
14	2	E8145-2	LOWER LINK BLOCK BOLT, NUT, & COTTER
15	1	E940308-1	GREASE FITTING
16	1	E31074	HINGE PIN RETAINER

Wear Data for GG Elevators

PART NUMBER	E31068
RATED CAPACITY	350 TON

STANDARD PINS

HINGE PIN PART #	E33998
TOTAL CLEARANCE(H)	0.045
HINGE PIN MIN. DIA. NEW	2.494
BORE DIA.MAX. NEW	2.502
BORE DIA.MAX.WORN	2.525

LATCH PIN PART #	E33999
TOTAL CLEARANCE(L)	0.035
LATCH PIN MIN. DIA. NEW	1.870
BORE DIA.MAX.NEW	1.877
BORE DIA.MAX.WORN	1.895

1/16" OVERSIZE PINS

HINGE PIN PART #	E33998-R
TOTAL CLEARANCE(H)	0.045
HINGE PIN MIN. DIA.	2.557
BORE DIA.MAX. NEW	2.565
BORE DIA.MAX.WORN	2.588

LATCH PIN PART #	E33999-R
TOTAL CLEARANCE(L)	0.030
LATCH PIN MIN. DIA.	1.932
BORE DIA.MAX.NEW	1.942
BORE DIA.MAX.WORN	1.959

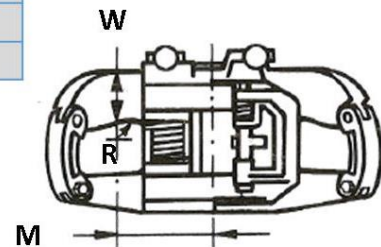
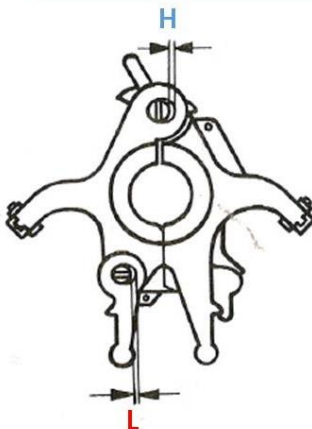
1/8" OVERSIZE PINS

HINGE PIN PART #	E33998-R
TOTAL CLEARANCE(H)	0.045
HINGE PIN MIN. DIA. NEW	2.619
BORE DIA.MAX. NEW	2.627
BORE DIA.MAX.WORN	2.650

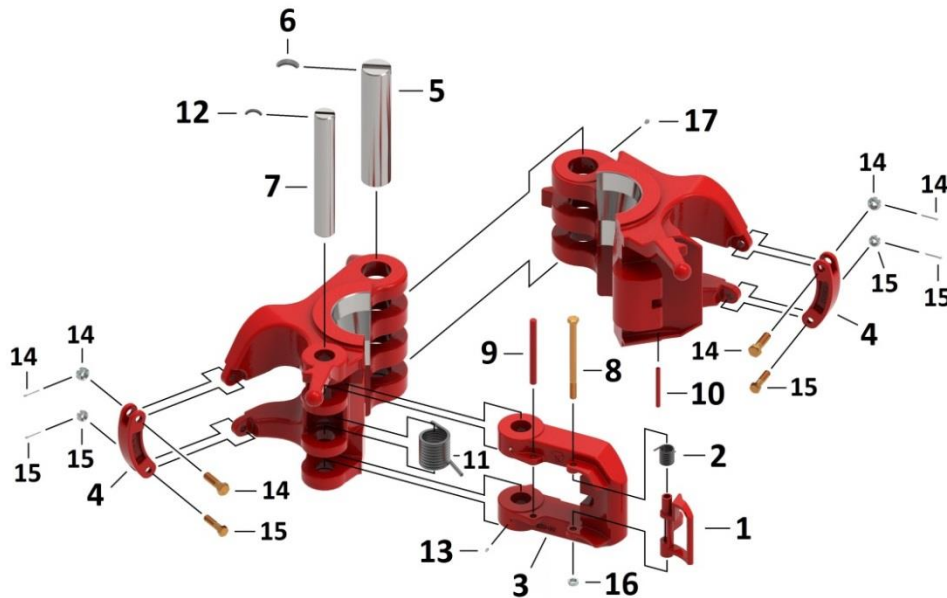
LATCH PIN PART #	E33999-R
TOTAL CLEARANCE(L)	0.030
LATCH PIN MIN. DIA. NEW	1.995
BORE DIA.MAX.NEW	1.205
BORE DIA.MAX.WORN	1.222

LIFTING EARS

DIMENSION (W)	4.500
RADIUS -R	1.875
DIMENSION (M)	7.375



HGG Replacement Parts



ITEM	QTY	PART No.	DESCRIPTION
1	1	E13152-1	Latch Lock
2	1	E13188	Latch Lock Spring
3	1	E30460	Latch
4	1	E30492	Link Block
5	1	E30553	Hinge Pin
6	1	E30609	Hinge Pin Retainer
7	1	E30613	Latch Pin
8	1	E31138	Latch Lock Bolt
9	1	E31215	Spring Stop Pin
10	1	E31216	Door Lug Pin
11	1	E31228	Latch Spring
12	1	E31525	Latch Pin Retainer
13	1	E316-TI	Grease Zert for Latch
14	2	E8145-1	Upper Link Block Bolt, Nut, & Cotter
15	2	E8145-2	Lower Link Block Bolt, Nut, & Cotter
16	1	E939484-8	Latch Lock Bolts, Nut
17	1	940308-1	Grease Zert for Door

WEAR DATA FOR HGG SERIES ELEVATORS

PART NUMBER	E70013
RATED CAPACITY	500 TON

STANDARD PINS

HINGE PIN PART #	E30553
TOTAL CLEARANCE(H)	0.045
HINGE PIN MIN. DIA. NEW	3.243
BORE DIA.MAX. NEW	3.252
BORE DIA.MAX.WORN	3.275

LATCH PIN PART #	E30613
TOTAL CLEARANCE(L)	0.045
LATCH PIN MIN. DIA. NEW	2.244
BORE DIA.MAX.NEW	2.252
BORE DIA.MAX.WORN	2.275

1/16" OVERSIZE PINS

HINGE PIN PART #	E30553-06
TOTAL CLEARANCE(H)	0.045
HINGE PIN MIN. DIA. NEW	3.306
BORE DIA.MAX. NEW	3.315
BORE DIA.MAX.WORN	3.338

LATCH PIN PART #	E30613-06
TOTAL CLEARANCE(L)	0.045
LATCH PIN MIN. DIA. NEW	2.307
BORE DIA.MAX.NEW	2.315
BORE DIA.MAX.WORN	2.338

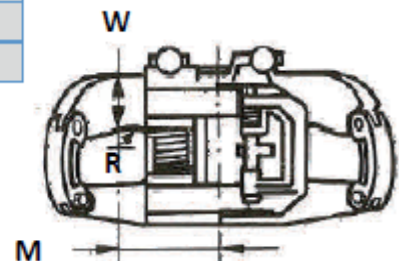
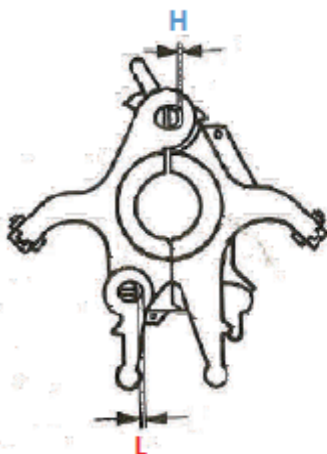
1/8" OVERSIZE PINS

HINGE PIN PART #	E30553-12
TOTAL CLEARANCE(H)	0.045
HINGE PIN MIN. DIA. NEW	3.368
BORE DIA.MAX. NEW	3.377
BORE DIA.MAX.WORN	3.400

LATCH PIN PART #	E30613-12
TOTAL CLEARANCE(L)	0.045
LATCH PIN MIN. DIA. NEW	2.369
BORE DIA.MAX.NEW	2.377
BORE DIA.MAX.WORN	2.400

LIFTING EARS

DIMENSION (W)	5.750
RADIUS -R	2.500
DIMENSION (M)	8.625



CERTIFICATE OF WARRANTY AND GUARANTEE OF QUALITY

KET warrants all materials and products manufactured to be free from defects in material and workmanship, under normal use and service, when installed, used, and serviced in the manner provided and intended by the seller for a period of twelve (12) months after delivery. Seller's obligation under this warranty is expressly limited to repair or replacement, at its option, of any materials or products, returned to the seller's plant in New Iberia, Louisiana and which are determined by the seller to be defective. All freight charges for return and reshipment shall be paid by the customer. A new warranty period shall not be established for repaired or replaced material or products; such items shall remain under warranty only for the remainder of the warranty period on the original materials or products. This is the sole warranty of the seller and no other warranty is either expressed or implied, in fact or by law, including any warranty at to the merchantability or fitness for a particular use or purpose.

In case of goods or parts not wholly of seller's manufacture, seller shall make available to the customer whatever warranty or guarantee is extended to seller for such goods or parts by the supplier or manufacturer thereof.

Seller will not assume responsibility or liability for any repairs, rebuilding, welding or heat treating done to its material or products outside of seller's plant, such work shall void all warranties. All parts used in the manufacture and /or final assembly of seller's materials or products are necessary for both safety and operational performance. Omission of any part or failure to replace any worn part may result in the malfunction and a consequent safety hazard for which seller disclaims any responsibility or liability for injuries or damage as a result thereof.

Buyer's sole and only remedy in regard to any defective materials or products shall be the repair or replacement thereof as herein provided, and seller shall not be liable for any consequential, special, incidental or punitive damages resulting from or caused by any defective materials, products or supplies.



For more information, please contact us at:

Keystone Energy Tools

8404 Hwy. 90 West

New Iberia, LA 70560

www.k-e-t.com

Office: 1-337-365-4411

Fax: 1-337-365-4456