

# OPERATOR'S MANUAL

## HEAVY DUTY STABBING GUIDES



### WARNING

Anyone using, installing, performing maintenance, changing accessories, or working near this tool must read and understand these instructions prior to performing such task.

DOCUMENT NUMBER  
**02-5000-MAN**

REV  
**0**  
Feb 2018

# SAFETY INSTRUCTIONS

Document No. 02-5000-MAN  
Revision 0  
Page 2 of 9

**WARNING:** To reduce the risk of injury, anyone using, installing, performing maintenance, changing accessories, or working near this tool must read and understand these instructions before performing such task.

## **Operating Hazards**

- ① Any abnormal operations or misuse of this equipment can cause damage to the equipment that may lead to product failure and/or personal injury.
- ① Use proper size stabbing guides designed to fit the drill pipe, tubing, or casing being used. Failure to use the proper stabbing guide can result in tool malfunction and/or personal injury.
- ① Failure to match the proper size stabbing guide to corresponding pipe may also cause damage to the tool that can lead to product failure and/or injury.
- ① To ensure proper operation, clean the stabbing guide daily.

## **Maintenance Hazards**

- ① Always practice safety when using or servicing stabbing guides by wearing proper Personal Protective Equipment (PPE). Failure to do so can result in serious injury.
- ① When repairing and/or replacing components, apply anti-seize lubricants or an oxide inhibitor to hardware to prevent freezing up after extended use.

## **Workplace Hazards**

- ① Always wear the proper Personal Protective Equipment (PPE) and methods when using this equipment.
- ① For professional use only.

# Table of Contents

1. General Information ..... 4  
2. Operation ..... 5  
3. Maintenance and Repair ..... 6  
4. Replacement Parts ..... 7-8  
5. Warranty ..... 9

## Introduction

This manual contains operations and maintenance instructions for the Keystone Energy Tools Heavy Duty Stabbing Guide, complete with parts breakdown as well as providing guidance for proper field use, disassembly, and repairs.

KET Heavy Duty Stabbing Guides (HDSG) are designed to align two separate sections of pipe for male-to-female connections providing protection from stabbing damage. They can be used when stringing a whole new pipeline as well as for connecting replacement sections to existing lines.

## Specifications

KET HDSG are manufactured from corrosion resistant material and durable polyurethane to resist gouging. The heavy duty, marine grade, aluminum hinged frame includes a tapered latch and adjustable catch cam assembled using stainless steel and brass hardware. The adjustable catch cam allows for slight adjustments to the ID if needed.

Tool joint OD size for the KET HDSG ranges from 1.315" through 8 1/2".

## Proper Use

KET HDSG are easy to use with little effort. First, verify you have the correct stabbing guide that corresponds to the pipe in use. With the HDSG closed and latched, place it over the female tool joint connection to properly align the male connection and prevent thread damage. Make adjustment to the catch cam if needed. (See Figure 1)

Once the connection is made and the threading has started, remove the HDSG by pressing the spring loaded latch and opening the guide to remove it from the connection joint.

Repeat the process for each connection.

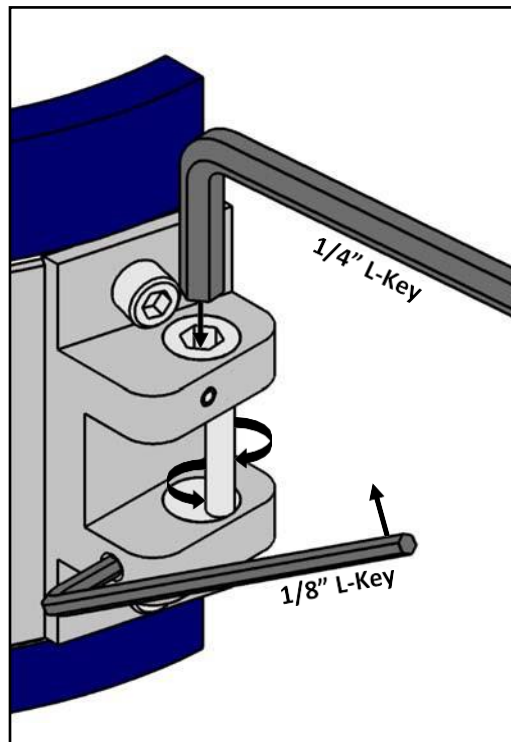


Figure 1

## Cam Adjustment

Using a 1/8" allen wrench (L-Key) loosen the set screw on the side of the catch block by turning counter clockwise. Using a 1/4 allen wrench (L-Key), adjust the cam to the desired location by rotating in either direction. Re-tighten the set screw to lock the cam in place.

## Maintenance

The simplistic design of the KET HDSG allows for quick and easy service or maintenance. If required, perform the following actions:

- 1) Clean the guide to remove any grease, mud, or other matter that may prohibit the guide from functioning properly. (Note 1)
- 2) Check for loose parts and tighten as needed.
- 3) Replace brass locknuts if they are removed for any reason.
- 4) Apply anti-freeze lubricants or oxide inhibitors to hardware screws and set screws if removed.
- 5) Apply thread locker to handle screws if removed.

Note 1: Never use an acid bath to clean the KET HDSG. Acid baths can dissolve the aluminum and dramatically reduce the life of the components and cause product failure.

## Repair

The KET HDSG does not include any weldments, therefore replacing components is as easy as removing the mounting hardware and replacing with new ones.

### Removing and Replacing the Poly Insert

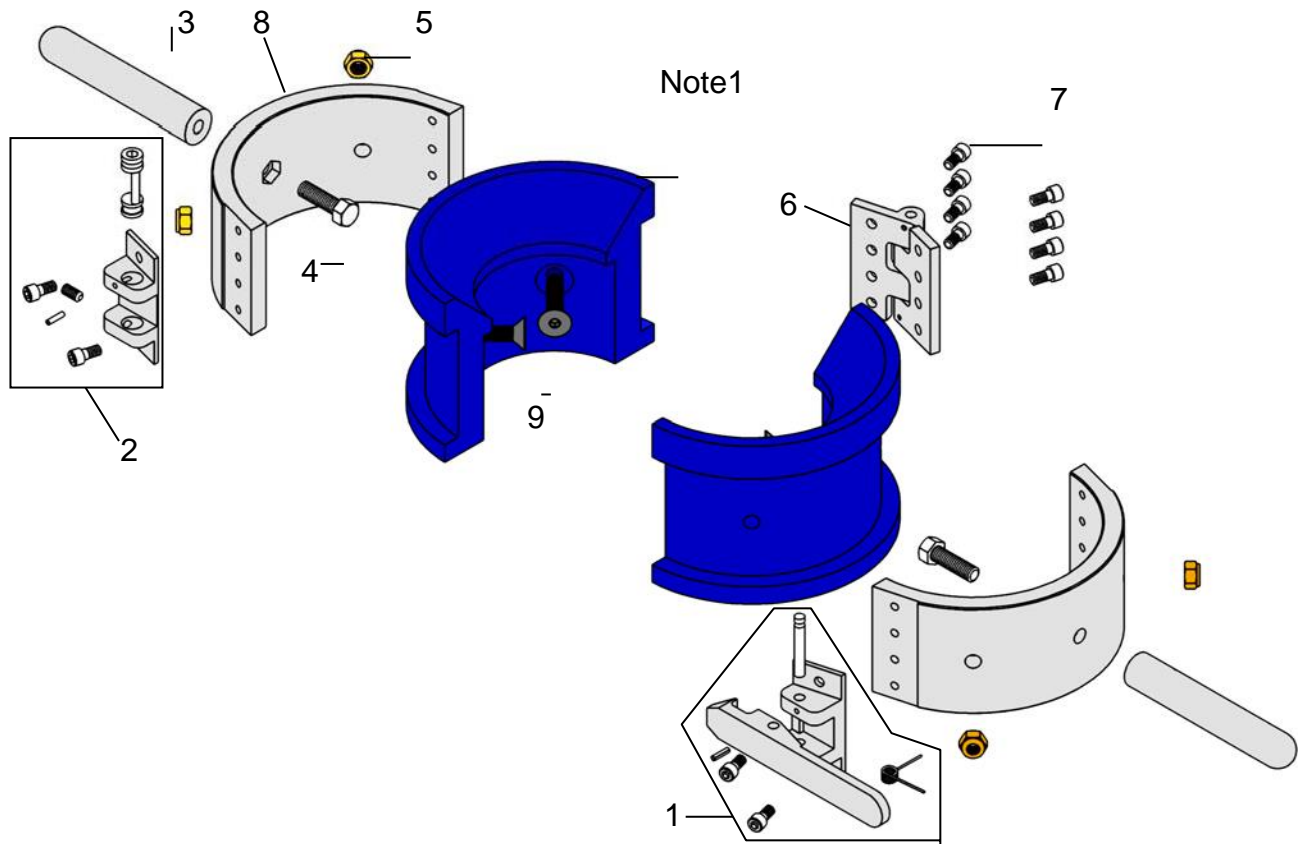
- 1) Unlatch and open the stabbing guide. Using a long 7/32 allen wrench (L-Key) or T-Handle Key to hold back-up, remove the brass locknut with a 9/16 socket or wrench.
- 2) Once all the brass locknuts are removed, tap out or unscrew the stainless steel retainer screws.
- 3) Remove and replace the poly insert.
- 4) Align the holes of the new poly insert with the holes in the ring and retain with screws and new locknut.

### Removing and Replacing the Catch and Latch Assemblies

- 1) With the HDSG open, remove the two hardware screws on the top on bottom of the assemblies using a 3/16" allen screw (L-Key).
- 2) Replace with new assemblies and attach with new or existing hardware screws.



**4.0 REPLACEMENT PARTS**

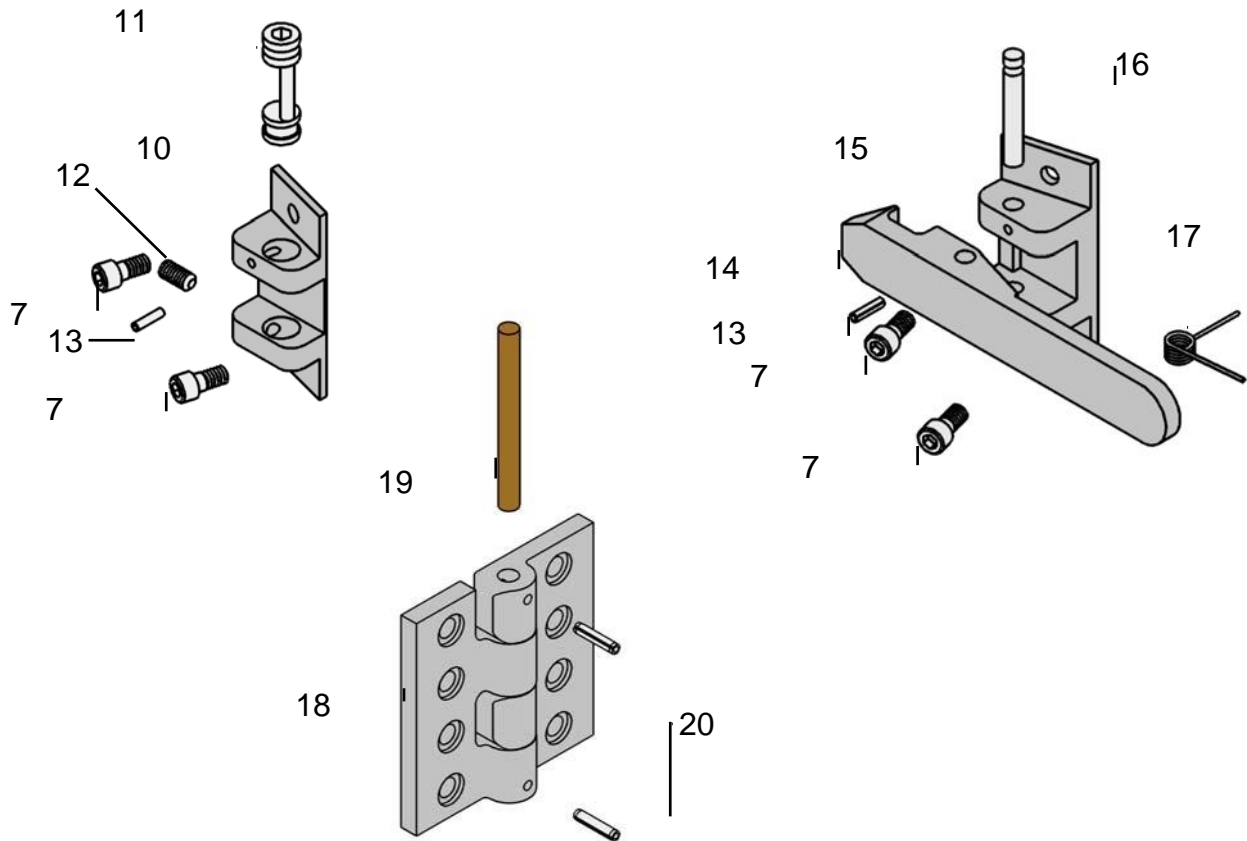


NO.	PART NO.	DESCRIPTION	QTY
1	02-552-1	HINGE BLOCK ASSEMBLY (SEE PAGE 8 FOR COMPONENTS)	1
2	02-553-1	CATCH BLOCK ASSEMBLY (SEE PAGE 8 FOR COMPONENTS)	1
3	02-558	HANDLE	2
4	02-558-S	HANDLE SCREW	2
5	02-557-N	NUT	4
6	02-559	HINGE (SEE PAGE 8 FOR COMPONENTS)	1
7	02-559-S	HARDWARE SCREW	12
8	02-560	4" RING	2
8	02-561	6" RING	2
8	02-562	9 1/2" RING	2
9	02-557-X	RETAINER SCREW (X = LENGTH, VARIES BASED ON SIZE)	4
N/A	02-500-1	4" STABBING GUIDE BODY ONLY (SEE NOTE 2)	1
N/A	02-500-2	6" STABBING GUIDE BODY ONLY (SEE NOTE 2)	1
N/A	02-500-3	9 1/2" STABBING GUIDE BODY ONLY (SEE NOTE 2)	1

Note 1: Multiple types and sizes of poly available. Contact Keystone Energy Tools for custom sizes. Note 2: Includes all components except poly inserts and retainer screws

## 4.0 REPLACEMENT PARTS

Document No. 02-5000-MAN  
 Revision 0  
 Page 8 of 9



NO.	PART NO.	DESCRIPTION	QTY
10	02-553	CATCH BLOCK	1
11	02-556	LATCH CAM	1
12	02-553-S	SET SCREW	1
13	02-550	RETAINER PIN	2
14	02-554	LATCH	1
15	02-552	HINGE BLOCK	1
16	02-555	LATCH PIN	1
17	02-551	SPRING	1
18	02-559-H	HINGE HALF	2
19	02-559-P	HINGE PIN	1
20	02-550-1	HINGE RETAINER PIN	2

## Manufacturers Limited Warranty

Products manufactured by *Keystone Energy Tools, LLC* (KET) are warranted to be free from defects in material and workmanship for one year from date of delivery. This warranty applies only to products purchased new from KET or its authorized dealers. Of course, this warranty does not apply to products which have been abused, misused, modified, or replaced by someone other than KET or its authorized service representatives.

KET will not assume responsibility or liability for any repairs, rebuilding, welding, or heat treatment done to its products outside of its facilities. All KET products are manufactured / assembled, as necessary, for both safety and operational performance. The omission of product components may result in a malfunction and consequent safety hazard for which KET disclaims any responsibility or liability for injuries or damage as a result thereof.

If a KET product proves to be defective in material or workmanship within one year of delivery, contact KET to obtain Return Authorization and return the product to our facility in New Iberia, Louisiana or an alternate facility as directed by KET. Upon receipt of product, KET will determine the cause for the return and, at its option, repair or replace defective products free of charge. Product repair / replacements are warranted as described above for the remainder of the original warranty period. ***(There are no other warranties expressed or implied and KET shall not be liable for incidental, consequential, or special damages or any other cost and expense of repair / replacement as described above.)***

In the case of goods or parts not manufactured wholly by KET, KET will make available to the customer whatever supplier warranty / guarantee is extended to KET for such goods / parts.

*For more information, please contact us at:*

Keystone Energy Tools, LLC  
8404 Highway 90 West  
New Iberia, La 70560

www.k-e-t.com  
Ph: 337-365-4411  
Fax: 337-365-4456

Products manufactured in the USA